

- FibreIRS optical input
- Choice of 1, 2, 3 or 4 satellites + TV/radio
- 8 and 16 output versions
- Space saving design—all connections on one side
- 32,768 potential user points within a 10km radius
- Frequency Morphing Technology (FMT) for Worldwide use
- All units powered by a single PSU
- Small form factor

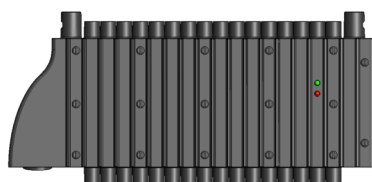


Introducing the new SwitchBlade from Global Invacom. A unique design that allows satellites to be added as and when required up to a maximum of four satellites. SwitchBlade can be used in conjunction with both the ODU32 or Optical LNB & incorporates Frequency Morphing Technology (FMT) that allows the SwitchBlade system to be programmed for use anywhere in the world.

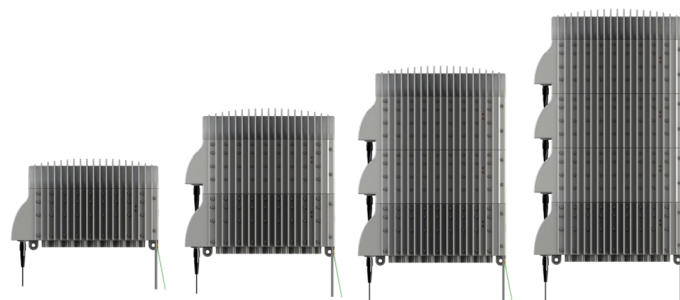
Two versions available — 8 output and 16 output. Compact design which maximises available space.



SatPlus unit



Base unit



1 SAT

2 SAT

3 SAT

4 SAT

#### Product Part No.

SwitchBlade Base 8 way	TBD
SwitchBlade SatPlus 8 way	TBD
SwitchBlade Base 16 way	D000196
SwitchBlade SatPlus 16 way	D000197

## Technical Specifications

Satellite (Electrical)			
Parameter	Min	Max	Notes
RF frequency range (MHz)	950	2150	
Output impedance	75Ω		
Return loss	10dB		
Gain variation across band		3dB *	
Nominal output level (Quad)	79dBμV		For 30 transponders
Noise figure @ max gain		5dB	
Terrestrial rejection	30dB		
* additional variation can occur due to satellite transmitted signal levels.			

DTT, DAB & FM (Electrical)			
Parameter	Min	Max	Notes
RF frequency range			
DTT		470-790MHz	
DAB		174-240MHz	
FM		88-108MHz	
Nominal impedance		75Ω	
Return loss	10dB		
Nominal DTT output		69dBμV	For 6 multiplexes
Gain variation across band		5dB	
Noise figure @ max gain		5dB	
950-2150MHz rejection	35dB		

FM,DAB,DTT & Satellite (Optical)			
Optical wavelength		1100nm to 1650nm	
Optical input power	-14dBm	-3dBm	Subject to optical budget limitation of system deployed

DC specification		
Input voltage range	11V to 20V	
Current consumption 16 way	1.2A Max	Based on a 4 satellite configuration
Current from receiver	<35mA	Per port
DiSEqC	1.0	

Dimensions (W x H x D)	
1 satellite (Base only)	227mm x 138mm x 67.5mm
2 satellite (Base + SatPlus)	227mm x 220mm x 67.5mm
3 satellite (Base + 2 x SatPlus)	227mm x 303mm x 67.5mm
4 satellite (Base + 3 x SatPlus)	227mm x 385mm x 67.5mm
Weight - 8 way	TBD
Weight - 16 way	TBD

Connectors	
Input	FC/PC
Output	F type (female)
Power supply	2.1mm Jack

Environmental Specification	
Operating temperature	-20°C to +50°C
Storage temperature	-40°C to +70°C

Software (GUI) for Frequency Morphing	
Supported operating systems	WinXP, Win7, Linux, Mac OS
Interface	UART

**Global Invacom will only support systems that are installed using  
FibreIRS™ approved fibre cabling & system components**

Note: Specifications subject to change without notice

Global Invacom Ltd., Freeman House, John Roberts Business Park, Pean Hill, Canterbury, Kent CT5 3BJ, United Kingdom

Tel: +44 (0) 1438 310510

Email: sales@globalinvacom.com Web: www.globalinvacom.com